



Monsoon Series Pond Pump

Owner Manual

Anjon Manufacturing
1000 Liberty Industrial Drive
O'Fallon, MO 63366

1-800-553-5605
www.anjonmfg.com



Anjon Monsoon Pump

Please read these instructions completely before using one of Anjon Pond Pumps in the table below.

Model	Rated Voltage	Rated Current Input	Motor	Flow	Max Total Head	Max. Operation Depth
MS-550	120V, 60Hz	0.45A	EM3000	550 G/h	11 ft	6.5 ft
MS-800	120V, 60Hz	0.68A	EM4500	800 G/h	13 ft	6.5 ft
MS-1200	120V, 60Hz	1.20a	EM8000	1200 G/h	18 ft	6.5 ft
MS-1600	120V, 60Hz	1.30A	EM10000	1600 G/h	18 ft	6.5 ft
MS-2000	120V, 60Hz	2.35A	EM12000	2000 G/h	20 ft	6.5 ft
MS-3000	120V, 60Hz	2.45A	EM12500	3000 G/h	21 ft	6.5 ft
MS-4000	120V, 60Hz	2.55A	EM15000	4000 G/h	21 ft	6.5 ft
MS-5200	120V, 60Hz	3.55A	EM20000	5200 G/h	24 ft	6.5 ft
MS-6100	120V, 60Hz	3.8A	EM25000	6100 G/h	27 ft	6.5 ft
MS-8000	120V, 60Hz	4.5A	EM30000	8000 G/h	29 ft	6.5 ft
MS-10000	120V, 60Hz	8A	EM40000	10000 G/h	39 ft	6.5 ft

These pumps are used as submersible and non-submersible pumps provided with overload-protected devices in garden ponds, fountains, terraced fountains, indoor fountains to circulate and oxygenate clear water. You can use suction cups or four screws to mount it. If mounted to appropriate base, make sure that the appliance is securely installed before operation.

These pumps are not for use in swimming pools!

CAUTION: These pumps should be installed according to your local electrical code. Please contact an electrician. For all technical data, please refer to the content stated on the rating label of the pump.

p. 1

Monsoon Pump Models: MS-550, MS-800, MS-1200, MS-1600, MS-2000, MS-3000, MS-4000, MS-5200, MS-6100, MS-8000, MS-10000

LIMITED WARRANTY

Products manufactured by ANJON are warranted to the original user only to be free of defects in material and workmanship for a period of 24 months from the date of purchase, but not more than 30 months from the date of manufacture. ANJON liability under this warranty shall be limited to repairing or replacing, at ANJON's discretion, without charge, F.O.B. ANJON will not be liable for any cost of removal, installation, transportation, or any other charges which may arise in connection with a warranty claim. Products which are sold but not manufactured by ANJON are subject to the warranty provide by the manufacturer of said product(s) and not by ANJON's warranty. ANJON will not be liable for damage or wear to products caused by abnormal operating conditions, accident, abuse, misuse, unauthorized alteration or repair, or if the product was not installed in accordance with ANJON's printed installation and operating instructions.

To obtain service under this warranty, the defective product must be returned to the distributor or dealer of ANJON's products from which it was purchased together with proof of purchase and installation date, failure date, and supporting installation data. Unless otherwise provided, the distributor or dealer will contact ANJON or an authorized service station for instructions. Any defective product to be returned to ANJON or a service station must be sent freight prepaid: documentation supporting the warranty claim and/or a Return Material Authorization (RMA) must be included if so instructed. In the absence of suitable proof of purchase date, the effective date of this warranty will be based upon the date of manufacture.

Any replacement product may be either new or like-new, provided that it has functionality at least equal to that of the product being replaced. No requests for service under this warranty will be accepted if received more than 30 days after the term of the warranty. Correction of defects, in the manner and for the duration of the warranty described in this warranty, shall constitute complete fulfillment of all liabilities and responsibilities of ANJON to the user with respect to the product, and shall constitute full satisfaction of all claims, whether based on contract, negligence, strict liability or otherwise. Except for the obligations specifically set forth in this warranty, in no event shall ANJON be liable for direct, indirect, special, incidental, or consequential damages, whether based on contract, tort, or any other legal theory and whether advised of the possibility of such damages.

ANJON reserves the right to change or improve its products or any portions thereof without being obligated to provide such a change or improvement for units sold and/or shipped prior to such a change or improvement.

THERE ARE NO EXPRESS OR IMPLIED WARRANTIES, INCLUDING MERCHANTABILITY OR FITNESS FOR A PARTICULAR PURPOSE, WHICH EXTEND BEYOND THOSE WARRANTIES DESCRIBED OR REFERRED TO ABOVE EXCEPT AS EXPRESSLY HEREIN PROVIDED THE GOODS ARE SOLD "AS IS", THE ENTIRE RISK AS TO QUALITY AND FITNESS FOR A PARTICULAR PURPOSE, AND PERFORMANCE OF THE GOODS IS WITH THE BUYER, AND SHOULD THE GOODS PROVE DEFECTIVE FOLLOWING THEIR PURCHASE, THE BUYER AND NOT THE MANUFACTURER, DISTRIBUTOR, OR RETAILER ASSUMES THE ENTIRE RISK OF ALL NECESSARY SERVICING AND REPAIR.

Some jurisdictions do not allow the exclusions or limitation of incidental or consequential damages and some jurisdictions do not allow limitations on how long implied warranties may last or require you to pay certain expenses as set forth above. Therefore, the above limitations or exclusions may not apply to you. This warranty gives you specific legal rights and you may also have other rights which vary from jurisdictions to jurisdiction.

p.7

Figure 1

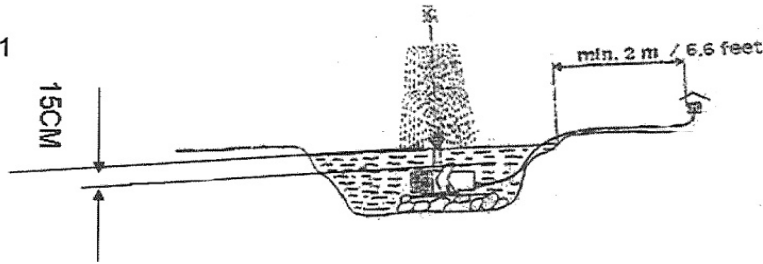


Figure 2

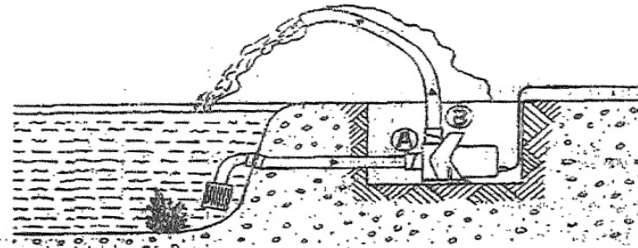


Figure 3

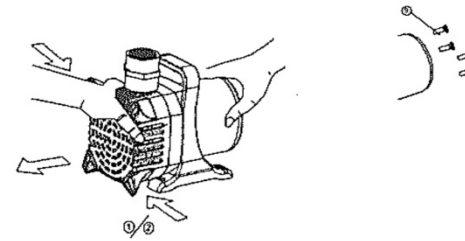
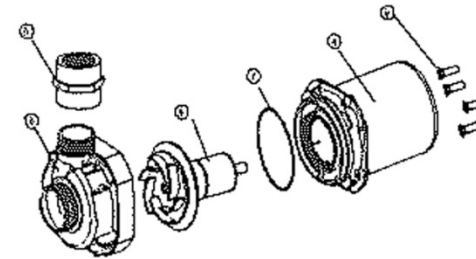


Figure 4



Safety Instructions

- Read and observe all the instruction supplied with the appliance and on the appliance
- Make sure that your outlet voltage corresponds to those stated on the rating label of the pump(s).
- Make sure the appliance is securely installed before operating it.
- The electrical connection should be located in a water-proof area and should be at least 6 feet away from the edge of the pond. (see fig. 1)
- Keep the electrical connections dry! Ensure that the electrical cord loop below the electrical outlet to form a "Drip Loop". This will prevent water from running down the cord into the electrical outlet
- Always unplug the appliance when not in use, before putting on or taking off parts, before cleaning the pump and before doing any work for the fountain or pond.
- The pump must not be used when people are working in water. Please disconnect the pump first.

- Do not operate any appliance with a damaged cord or plug, or in abnormal state. The supply cord of the appliance cannot be replaced. **If the cord is damaged the appliance should be scrapped.**
- For safety reasons, any repair work should be done only by the manufacturer of the products or the authorized service facility or discard it
- Never hang or transport the pump by means of pulling the power cord!
- Close supervision is necessary when the appliance is used by or near children.
- If you want to disconnect the pump, you can pull out the plug and the plug must be placed where you can access it.
- Never use any accessories which are not recommended by the appliance manufacturer. It may result in fire, electric shock, personal injury and/or voided warranty.
- The pumps power should be supplied through a Ground Fault Circuit Interrupter (GFCI) with a rated residual operating current not exceeding 30mA.
- Min Length of power cord is 30ft.
- To protect against the risk of electrical shock, do not immerse the plug in water or other liquid.

Used as submersible pumps (see fig. 1)

IMPORTANT: Do not let the pump run dry – this could cause damage to the motor.

- Submerge the pump completely in your pond so as to make the pump body fill with water.
- A water level of approx. 6 in. is required for submersible use in order to prevent the pump from taking in air. (see fig.1)
- The pump is designed to accommodate internal threads as well as external threads through the socket (fountain jets, nozzles, water height regulators, standpipes, etc.).
- Running in conjunction with fountain jets, the pump should be stationed firmly and horizontally (i.e. on a brick)
- The pump can be switched on by simply plugging it in and switched off by un-plugging it.
- The water temperature should not exceed 95°F (35°C) and do not let the pump freeze in the wintertime.
- This appliance is not intended for use by persons, (including children) with reduced physical sensory or mental capabilities, or lack of experience and knowledge, unless they have been given supervision or instruction concerning use of the appliance by a person responsible for their safety.

- Children should be supervised to ensure that they do not play with the appliance.

Used as non-submersible pumps (see fig. 2)

- Position the pump lower than the water surface on the side of the pond so that the water can be drained to the pump because it is not self – priming.
- Remove the intake cover (see fig.3) and connect suction hose (A) and pressure hose (B) from the pump. The connection should be waterproof.
- Fill the suction hose and pump with water before turning it on.
- To prevent the pump from becoming clogged, provide the suction hose with an adequate suction filter.
- The pump is only suitable for use with GFI (ground fault interrupter) 30 mA outlet. Never let the pump run dry.

Overload Protection

The pump has a built-in thermal overload trip which prevents the pump from overheating. The pump must be allowed to cool down before restarting. If the pump will not start again automatically when cooling down please check the following conditions;

- Is there sufficient water supply? → *add water if necessary*
- Has dirt entered the pump housing? → *follow the cleaning instructions below*
- Have hoses or jets become clogged? → *Clean if necessary*
- Has the pump sufficiently cooled down after overheating?
- As soon as you have completed this checklist, you can start the pump again by plugging it back in.

Maintenance and Cleaning (see fig.3)

1. Follow these safety instructions. Make sure that the pump is unplugged.
2. Press the intake cover (1) together laterally and take it from the pump housing.
3. Loosen the 4 outer screws (9).
4. Rotate the pump housing (6) ¼ turn Counter Clockwise. Unclip it from the motor housing (4).
5. Remove the rotor (8) from the motor housing (4).
6. Clean all parts using water and a soft sponge. In hard water conditions a mixture of CLR and water bath is recommended.

Assembling the pump together

1. Place the rotor (8) in motor housing (4) with caution.
2. Make sure the rotor is assembled correctly and will turn freely and check the position of the sealing ring (7) on the pump housing (6).
3. Put the pump housing (6) on and turn CW (clockwise) ¼ turn. Tighten the 4 screws (9) uniformly.
4. Place the intake cover (1) on the pump housing (6) .

WARNING:

- Risk of electric shock – This pump is supplied with a grounding conductor and grounding type attachment plug. To reduce risk of electric shock, be certain that it is connected only to a properly grounded, grounding-type receptacle
 - Risk of Electric shock. Do not remove cord and strain relief. Do not connect conduit to pump.
 - This pump has been evaluated for use with water only.
 - Reduce risk of electric shock during operation of this pump requires the provision of acceptable grounding
 - Risk of electric shock – This pump has not been investigated for use in swimming pool or marine areas.
 - Do not connect to any voltage other than that shown on the pump
 - Always disconnect from electrical supply before handling pump.
 - Don't operate without water
 - Operate pump completely submerged for proper cooling
- DISPOSAL: Do not dispose this product as unsorted municipal waste. Collection of such waste separately for special treatment is necessary. Please recycle this product or send it to us for recycling.