

Matala Gravel Vacuum Head



Instruction and Maintenance Manual

- The Matala Gravel Vacuum Head is designed to clean gravel bottom ponds.
- Suitable gravel sizes are between 3/8" to 1" size.
- The gravel vacuum head can be used to clean the surface of the rock or it can be pushed into gravel up to 2 inches deep for a deeper cleaning.

Proper Use of Matala Gravel Vacuum Head

Effectiveness of the gravel cleaning will depend on several factors:

-Type of surface debris

The vacuum head is designed to vacuum sludge, loose algae, small leaves and small organic sediment. Small grains of sand may be lifted depending on the power of your vacuum.

Algae which adheres to the rocks will not be removed by the vacuum head.

Do not attempt to vacuum large leaves or sticks as these may become lodged in the intake hose and reduce suction power of your vacuum. Use a good pond cleaning net to remove large and heavy debris first before using the gravel vacuum.

-Large rock and stone shapes and sizes

Uneven rock shapes and piles will make it more difficult to position the gravel vacuum head for good suction. The vacuum head is 8.5" diameter and may not fit into every nook or crevice.

-Power of your vacuum

The gravel vacuum head adapter will fit most vacuum poles on the market. However, the actual suction power of your vacuum will determine the effectiveness of the vacuum head. The Matala Gravel Vacuum Head is ideally suited for the Matala "Power-Cyclone" Pond Vacuum.

Procedure for Gravel Cleaning

1) Surface Cleaning.

Place the gravel vacuum head in one spot on top of the area you want to clean. Try to level the rim of the head so that all edges are in contact with the area. The goal is to form a light seal with the gravel area you are cleaning. Leave the vacuum head in this spot for 5 to 10 seconds. You can also rotate the head around this same spot to try and dislodge loose particles from the surface. Do not move the vacuum head too quickly otherwise you will push loose debris up into the water. Slowly lift the head from the original spot and gently set it down in the next area you want to clean. Repeat the above action as you move from spot to spot.

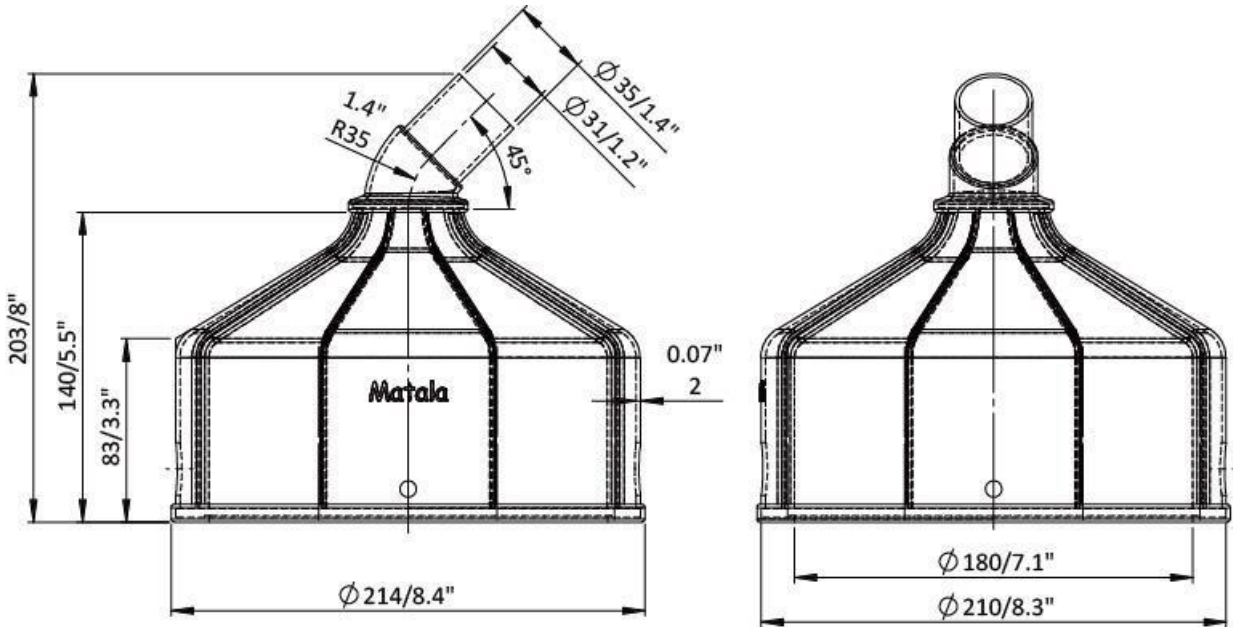
2) Deep Gravel Cleaning

After positioning the vacuum head for surface cleaning, simply rock the head back and forth and side to side as you gently push the head down into the gravel up to 2 inches deep. This works well with 3/8" to 1/2" size gravel. Large size gravel will require more effort and you may not be able to get the head down into the gravel by more than 1/2" deep.

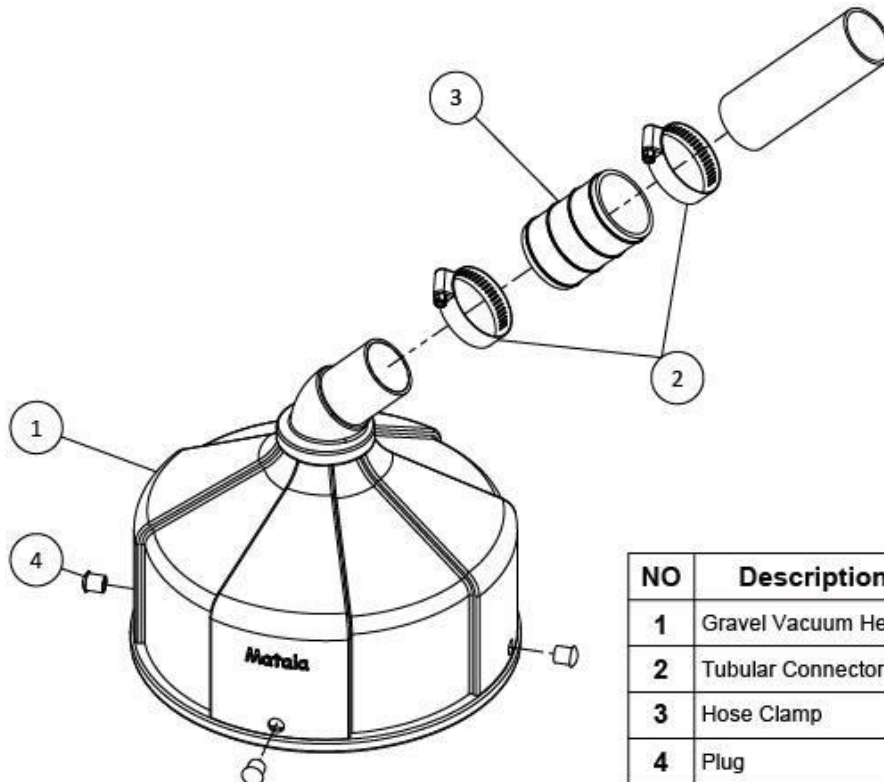
Leave the vacuum head in this position for 10 seconds or longer. Try to slowly rotate the head in a circular manner, back and forth and side to side in order to dislodge more of the dirt from this one spot. The opaque plastic allows you to see a change in the color as the dirt is lifted up into the head. The dirty color will gradually clear as the dirt is lifted from the gravel. You may be able to see the gravel moving through the opaque plastic. Do not

expect to get the gravel completely clean. After 10 to 15 seconds in this one spot, lift the vacuum head straight up and allow the cleaned gravel to fall back into place. Move the head to the next area you want to clean and repeat the above procedures.

Dimension



Parts Diagram



NO	Description	Q`TY	NOTE
1	Gravel Vacuum Head	1	
2	Tubular Connector	1	
3	Hose Clamp	2	SUS304
4	Plug	4	

Installation

1. Please put on part 2 in Gravel vacuum head.



2. Insert the extension pipe into part 2.



3. Use a slotted screwdriver to tighten on two hose clamps.

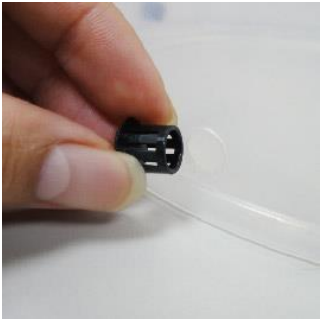


4. Congratulations, you've done it!

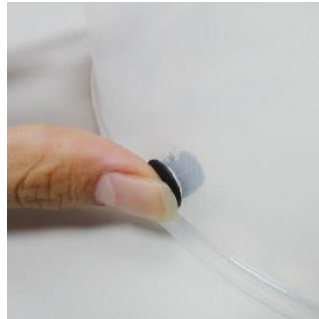


Suction Adjustment Plug: Use plug to increase or decrease suction power.

1. Please put a plug into the hole of gravel vacuum head.



2. Push the plug completely until tight.

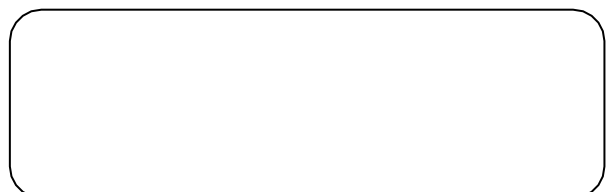


! WARNING : *A note of caution!*

Deep gravel and very dirty old gravel bottom ponds can develop bad gases like hydrogen sulfide which are trapped down deep in the gravel. Be extra cautious the first few times you clean the gravel. If you release toxic gases into the pond water it can harm the fish. It is best to gradually clean deeper and deeper into the gravel over the course of a few weeks rather than all at one time. If using this approach, only clean down a 1/2" into the gravel per week. Go deeper every week as the gravel is slowly cleaned.

Alternatively, if you choose to deep clean right away then leave the head in this one spot for up to 30 seconds or longer in order to draw out most of any potential bad gases. Do not deep clean more than 10% of the gravel bottom until you are certain of the conditions present. High oxygen levels help to detoxify hydrogen sulfide gas.

DISTRIBUTED BY



160128