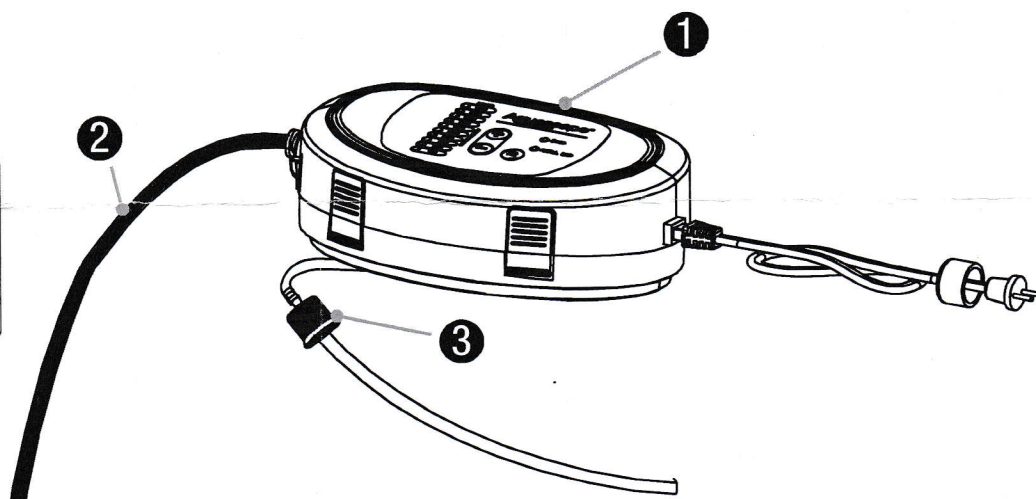




AUTOMATIC DOSING SYSTEM CONTROL PANEL KIT (Item #96054)

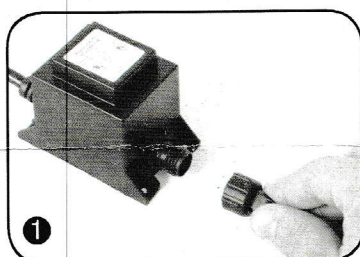
Contents	
No.	Description
1.	(1) Control panel
2.	(1) Black discharge tubing (6')
3.	(1) Clear inner tubing



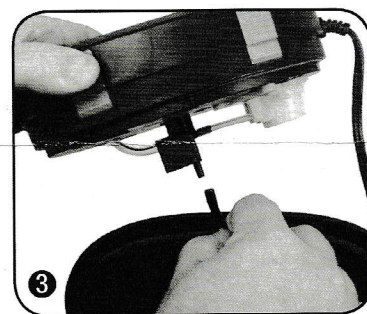
This kit contains replacement components that will ensure your Automatic Dosing System is in optimal working condition. The kit consists of a new control panel (with prime function) plus new discharge and inner tubing.

Instructions

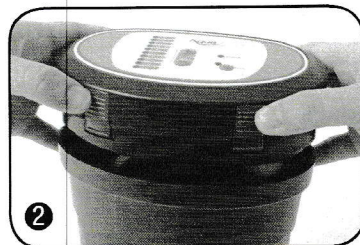
1. Unplug the Automatic Dosing System power cord from the transformer using the quick-connect fitting.



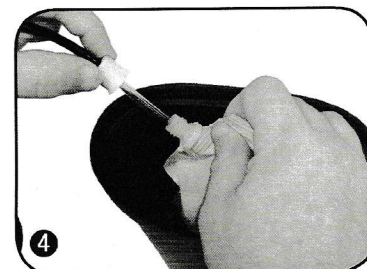
3. Disconnect the existing inner tubing connected to the underside of the control panel and set the old control panel aside as it will no longer be needed.



2. Remove your current Automatic Dosing System control panel from the canister by indenting the blue tabs on the side of the control panel and lifting upward.

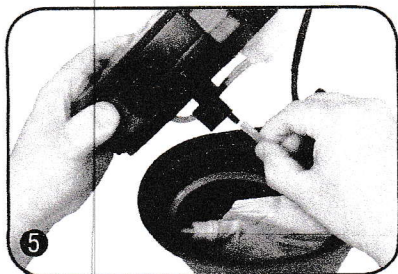


4. Remove the threaded cap and tubing from the water treatment pouch and leave the pouch sitting inside the canister.

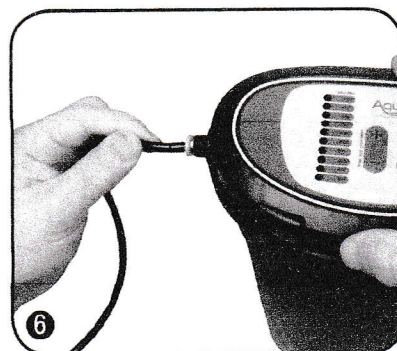


INSTALLATION INSTRUCTIONS

5. Install the new clear inner tubing with the threaded cap into the water treatment pouch and connect the other end of the tubing to the bottom of the new control panel. Then, place the control panel on your canister.



6. Insert the new black discharge tubing into the fitting on the side of the new control panel. Simply insert the tubing into the fitting until it stops.

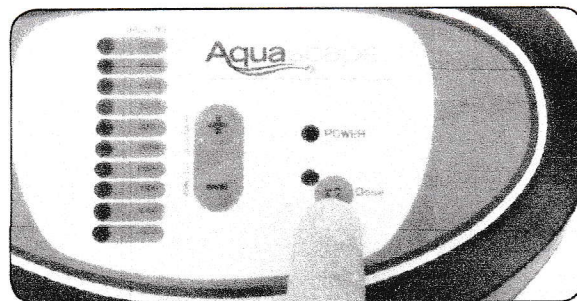


Please note: your new discharge tubing does not require a check valve.



Automatic Dosing System prime function: This function allows you to automatically prime the water treatment through the system each time you add a new water treatment pouch, reducing setup time.

To enter the priming mode, hold the X2 button for 3 seconds until the LED indicator light begins to flash. The system will begin to slowly prime itself, pushing the water treatment through the length of tubing. The priming mode will automatically turn off after approximately ten minutes and return to normal operation. The priming mode can be exited at any time by pressing the X2 button while the unit is priming.



For more information about our company or products, please visit our website at www.aquascapeinc.com or call us at (US) 1-866-877-6637 (CAN) 1-866-766-3426