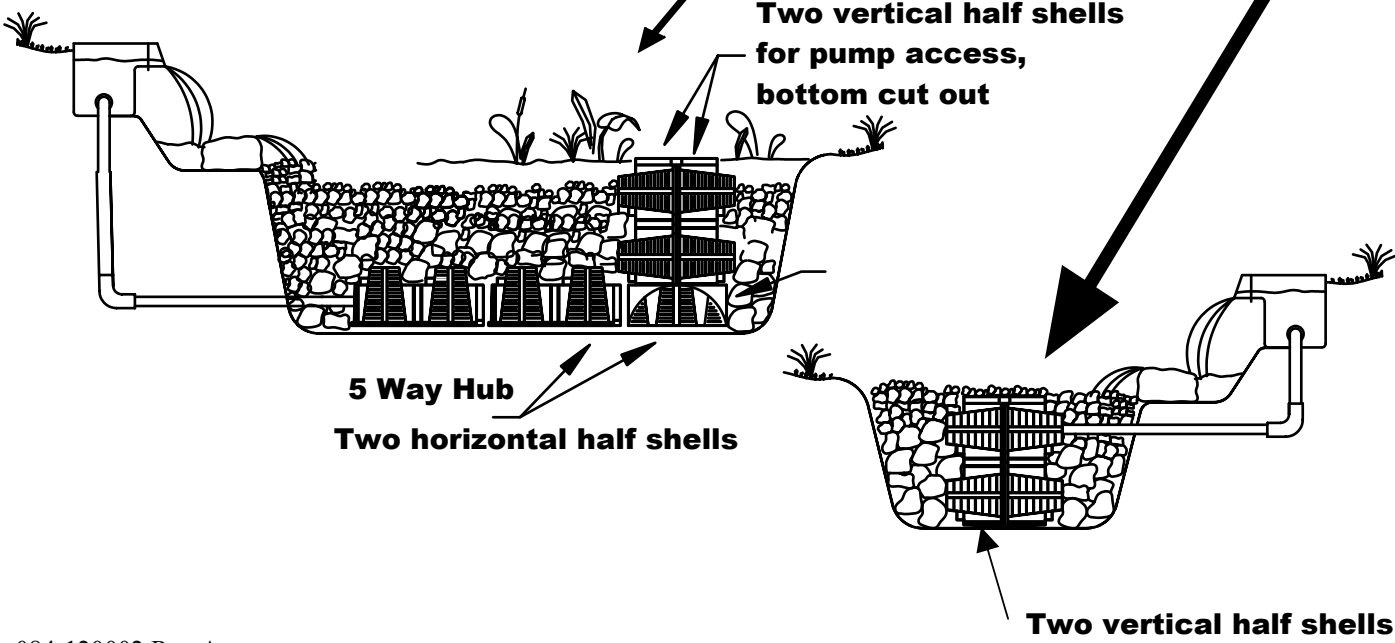
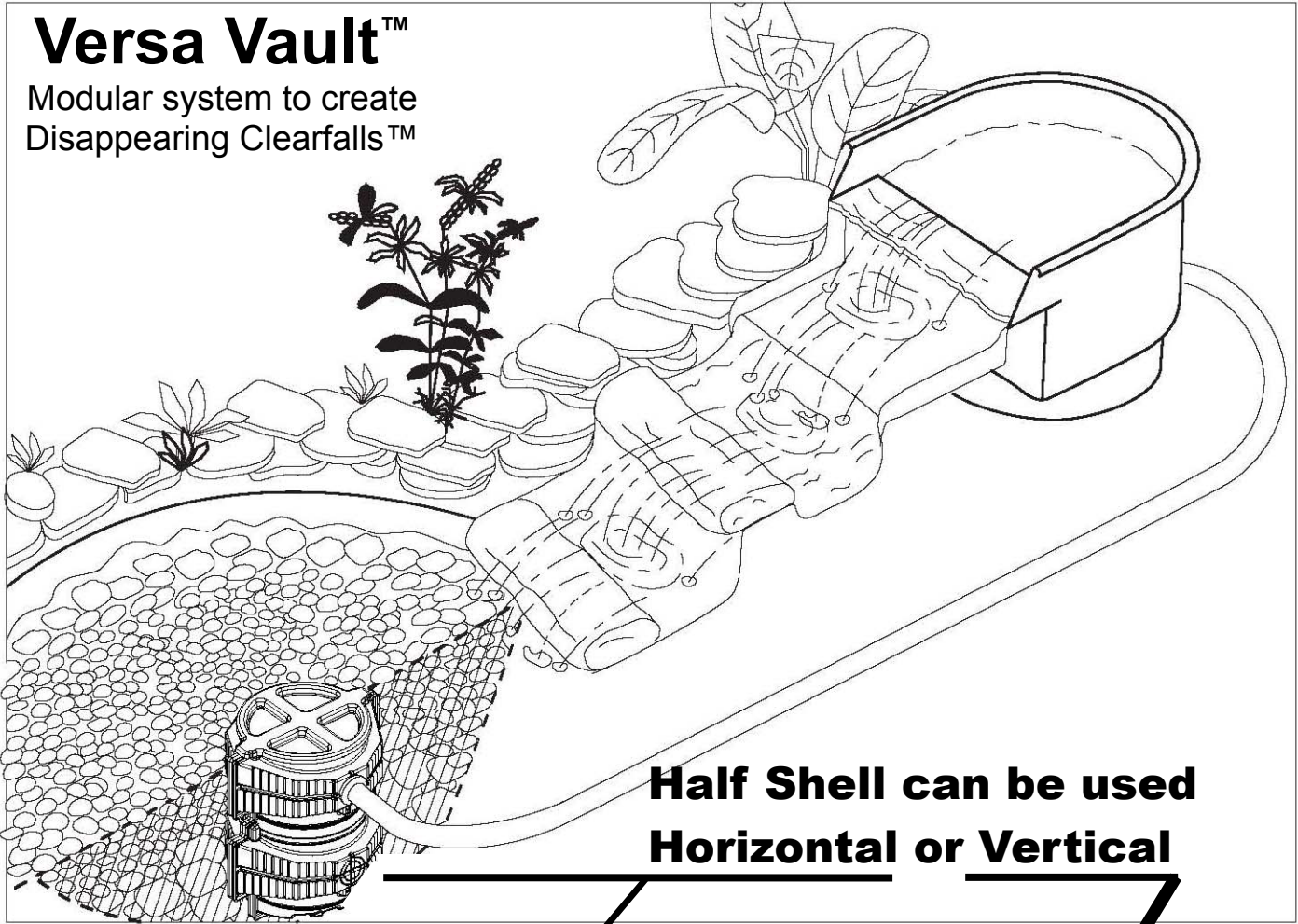
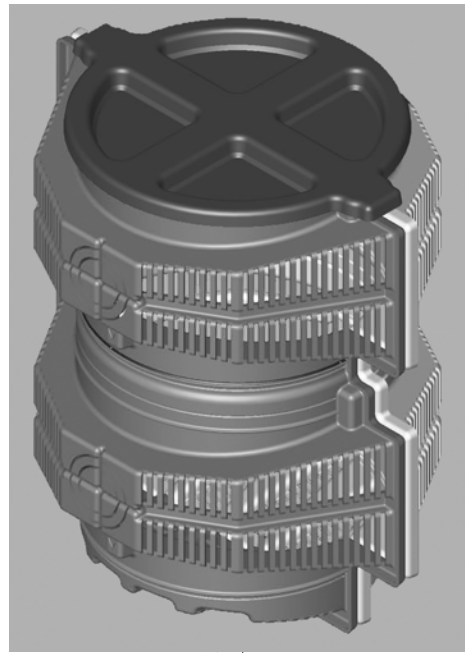


7176310 Half Shell 7176410 5-Way Hub 7178510 Lid

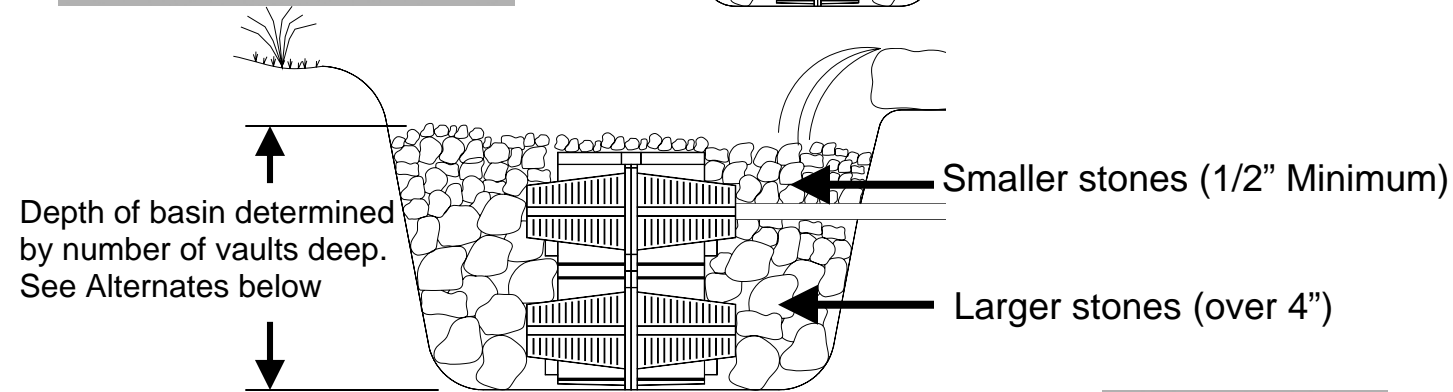
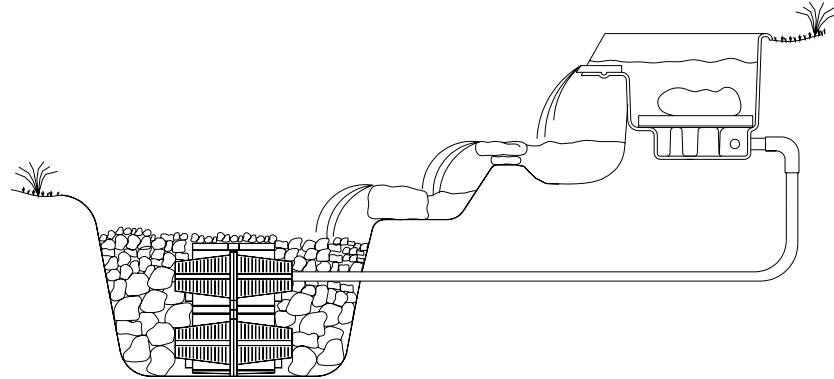
Versa Vault™

Modular system to create
Disappearing Clearfalls™



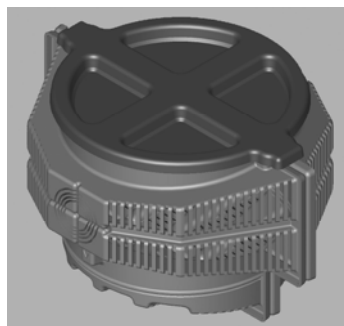
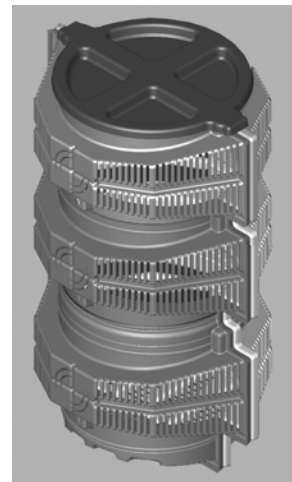


7176210-VLTK2 Pump Vault
25" High x 13.4" inside diameter
120 Sq inches of intake area
12000 gph max pump flow rate

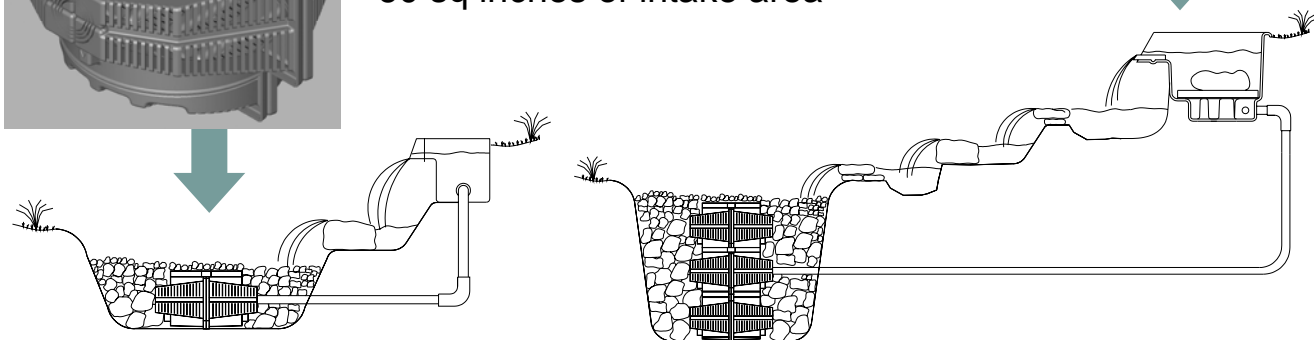


Alternate vertical configurations

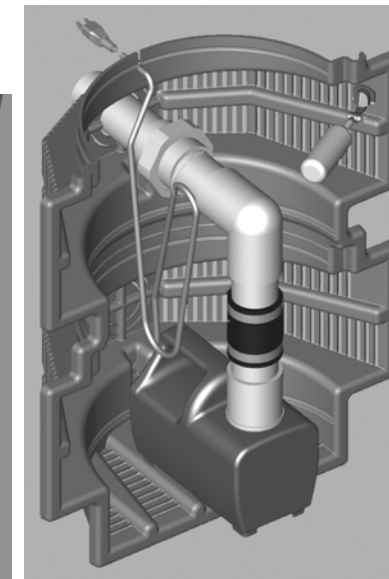
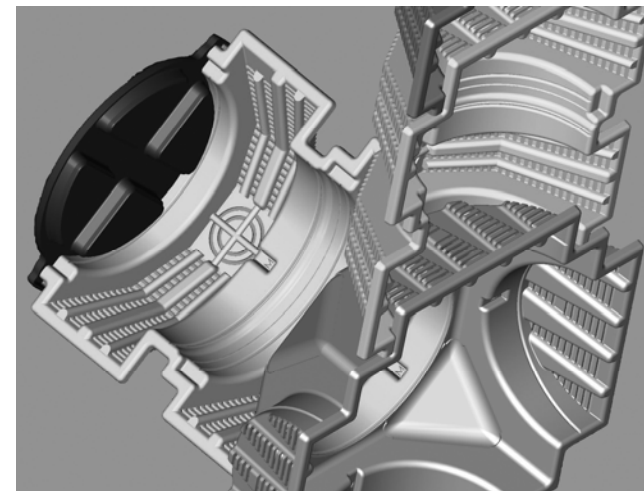
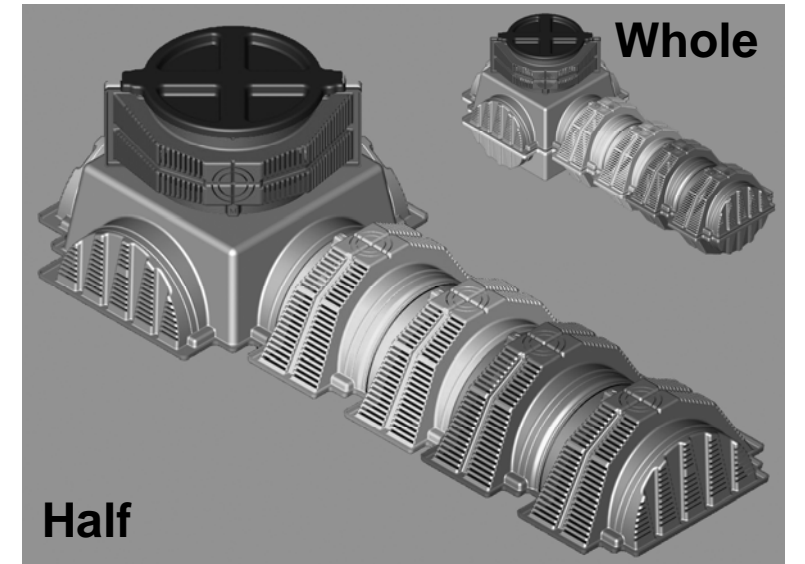
1 1/2 Vaults, uses 1 top half of 7176210 and one complete 7176210
34" High x 13.4" I.D., 168" sq inches of intake area



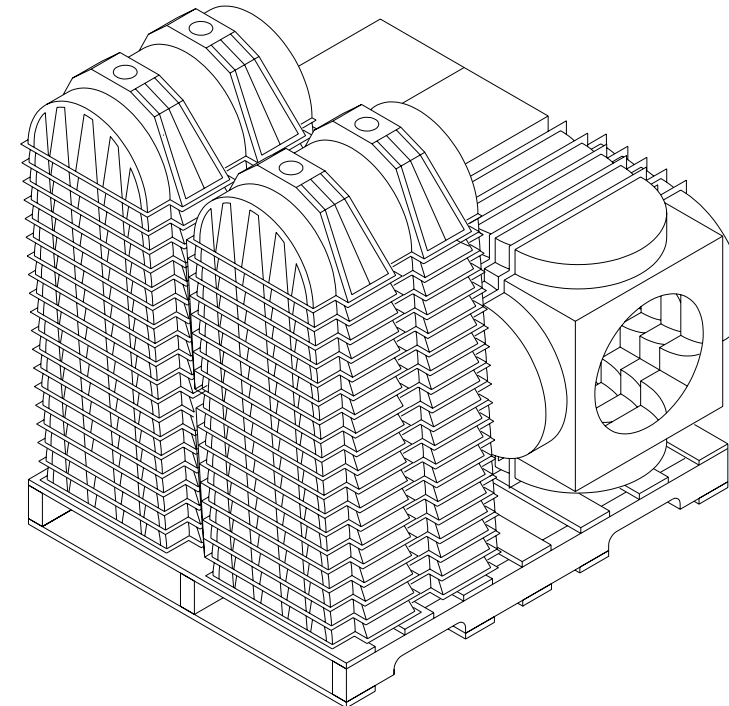
1/2 Vault, uses 1 bottom half of 7176210
13" High x 13.4" I.D.
60 sq inches of intake area



For Larger system lay shells horizontal and use Hub.
System can be installed in half or whole shells in any 4 directions from the hub. Number of sections determine size and flow rate.
Top access is via vertical shells which can be cut to various depths as needed



Auto Fill valve installation:
1) Choose location on flat area (allow some room for pump access)
2) Drill thru hole per valve size
3) Adjust float to desired water level



7176510 VLTBULK Pallet Pack
-40 half shells
-20 lids
-5 hubs

With this pallet pack you can sell or create:
-20 Stand alone pump vaults or
-5-1/2 depth 5 way hub systems with 8 half shells each or
- 4- full depth 5 way hub systems with 4 full shells each